

# EDUCATION IN APPALACHIA

Use *The Appalachian Region: A Data Overview from the 2014–2018 American Community Survey*—also known as the Chartbook—to discover more about income and poverty in Appalachia. Authored by the Population Reference Bureau with the Appalachian Regional Commission, the Chartbook features data on income, employment, education, and other indicators at the regional, subregional, state, and county levels, and examines data change over recent years to show trends. The Chartbook draws on data collected before the COVID-19 crisis to provide benchmarking for when new information becomes available.

## HIGH SCHOOL DIPLOMA

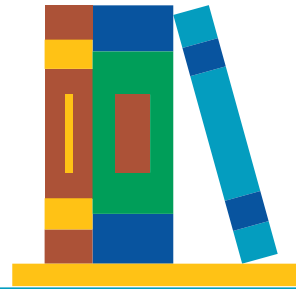
# 88.7%



of Appalachian adults ages 25–64 have earned a high school diploma, similar to the U.S. average of **88.8%**.

## ASSOCIATE'S DEGREE

# 9.8%



of Appalachian adults ages 25–64 have an associate's degree—slightly more than the **9.1%** of U.S. adults.

## BACHELOR'S DEGREE

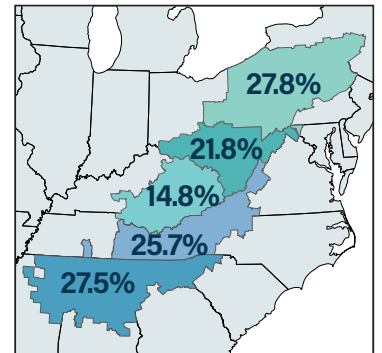


# 25.7%

of Appalachian adults ages 25–64 hold a bachelor's degree. The U.S. figure is **32.9%**.

## BACHELOR'S DEGREE BY SUBREGION

The share of adults ages 25–64 with a bachelor's degree is highest in Northern Appalachia and lowest in Central Appalachia.



## STEM DEGREE

In Appalachia, **30.8%** of adults ages 25+ with a bachelor's degree earned it in a STEM field. The U.S. figure is **35.0%**.

